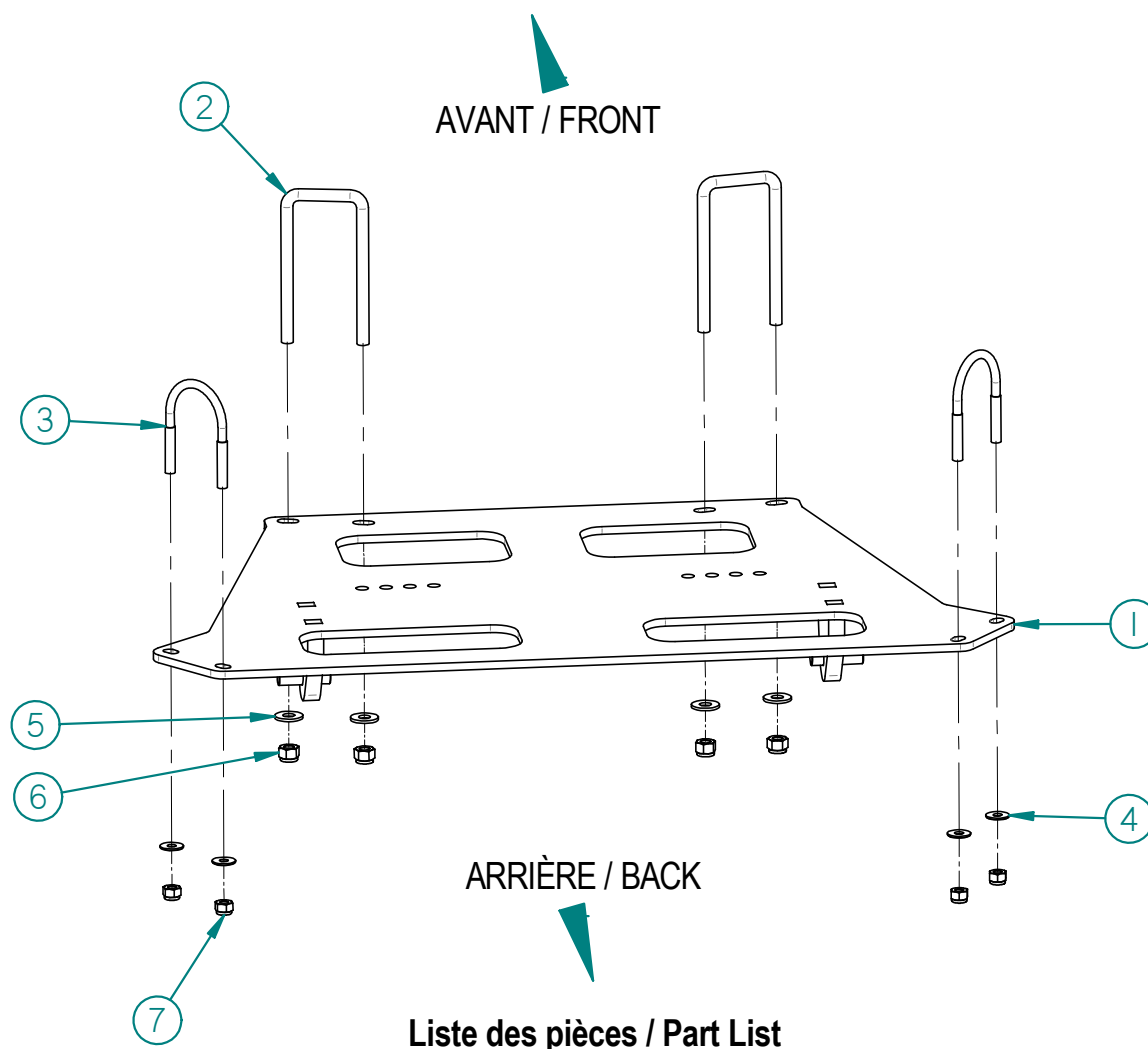


00PG-014: PLAQUE ADAPTEUR / PLOW PLATE



RÉF	# PIECE/PART	QTÉ/QTY
1	03PG-014	1
2	SBUB3I8-16x2x5	2
3	UB2x5I16-18x3-1I4	2
4	FW1I4USS	4
5	FW5I16USS	4
6	HLN3I8-16ZBG2	4
7	HLN5I16-18ZBG2	4

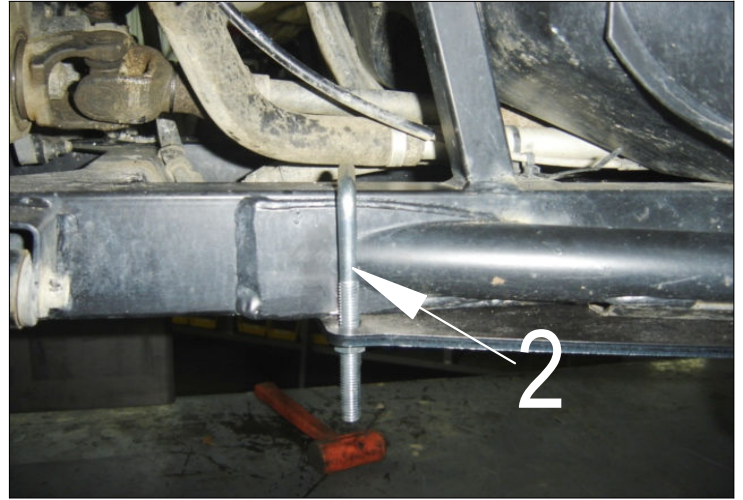
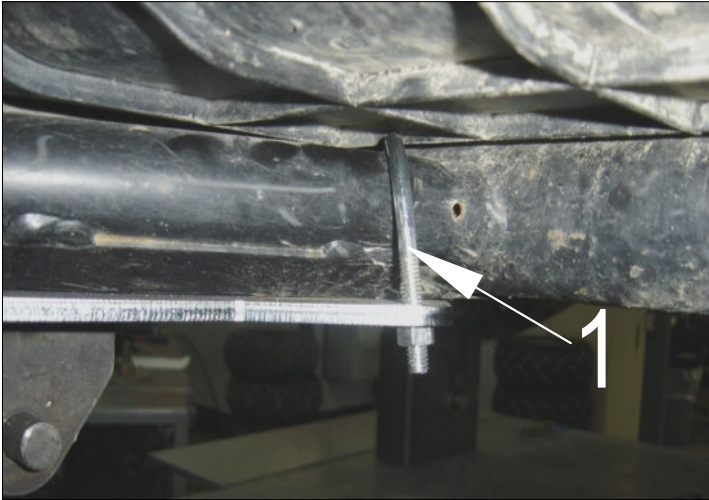
2009-10-26



LES FABRICATIONS TJD INC.

147, chemin des Raymond, Rivière-du-Loup (Québec) G5R 5X9
www.tjd.ca

Installation de la plaque de gratte 00PG-014



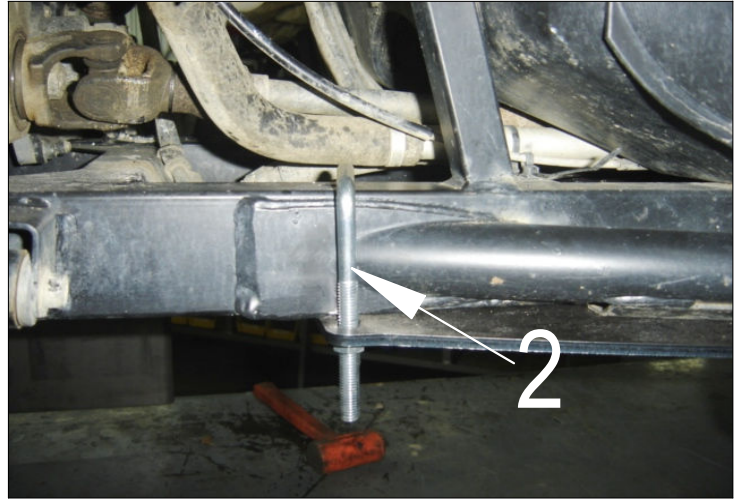
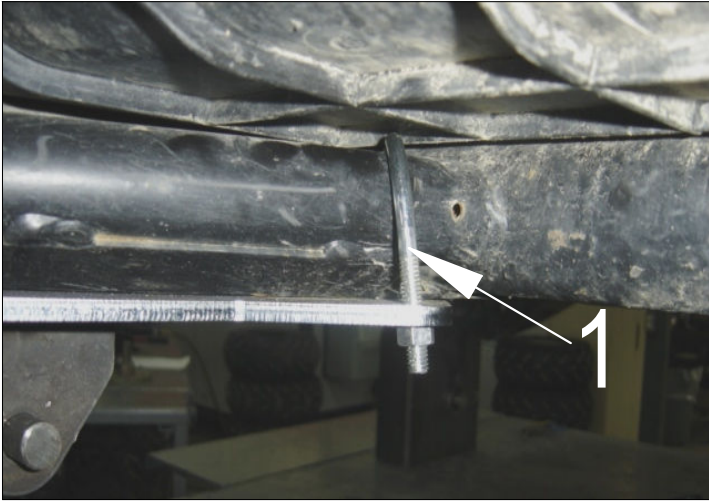
← Avant du véhicule

- Positionner la plaque en plaçant les boulons en U#UB2x5|16x2x5 à l'extrémité arrière de la section ronde de la structure du véhicule (flèche 1)
- Le boulon en U#SBUB3|8-16X2X5 se place à l'avant de la section ronde de la structure du véhicule (flèche 2).
- En se servant des trous oblongs comme guide, percer la structure du véhicule au besoin avec une mèche de 13/32" (flèche 3).
- Serrer tous les boulons fermement.



↙ Avant du véhicule

Plow plate 00PG-014 installation



← Front of the vehicle

- Position the plate by putting the U bolts #UB2x5|16x2x5 a the rear end of the round section of the frame (1 above).
- The U bolts #SBUB3|8-16X2X5 goes infront of the round section of the frame (2 above).
- Using the slots as a guide, drill the frame as needed with a 13/32" drill (3 below).
- .-Tight all the bolts firmly.



↙ Front of the vehicle