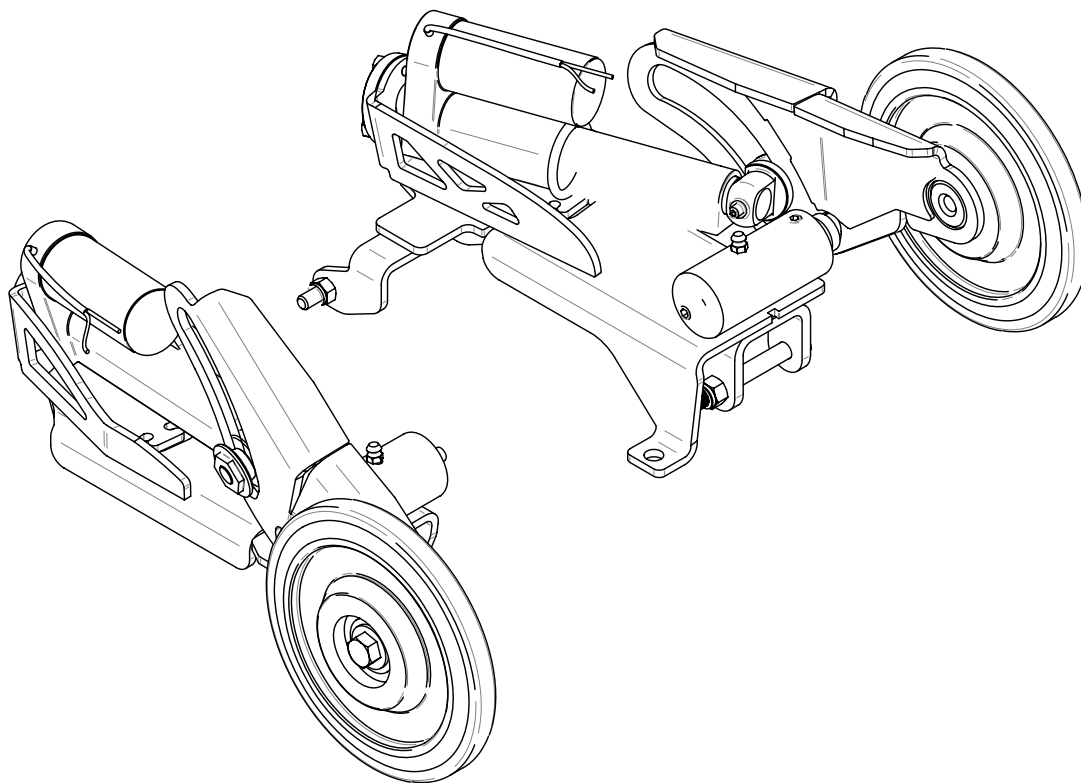


Les Fabrications TJD

Rivière-du-Loup

Québec, Canada

G5R 5X9



SNOWMOBILE WHEELS

Les Fabrications TJD

Copyright Les Fabrications TJD, Rivière-du-Loup. No copy or reproduction of this manual, in whole or in parts, may be made without the explicit assent of Les Fabrications TJD.

WELCOME

Congratulations! You've purchased a revolution in the field of the snowmobile skis. The SkiWheels Electric kit of Les Fabrications TJD.

Excellent to reduce wear on carbide runners and to facilitate the control of your snowmobile on hard or non-slip surfaces, The wheels SW Electric are the solution.

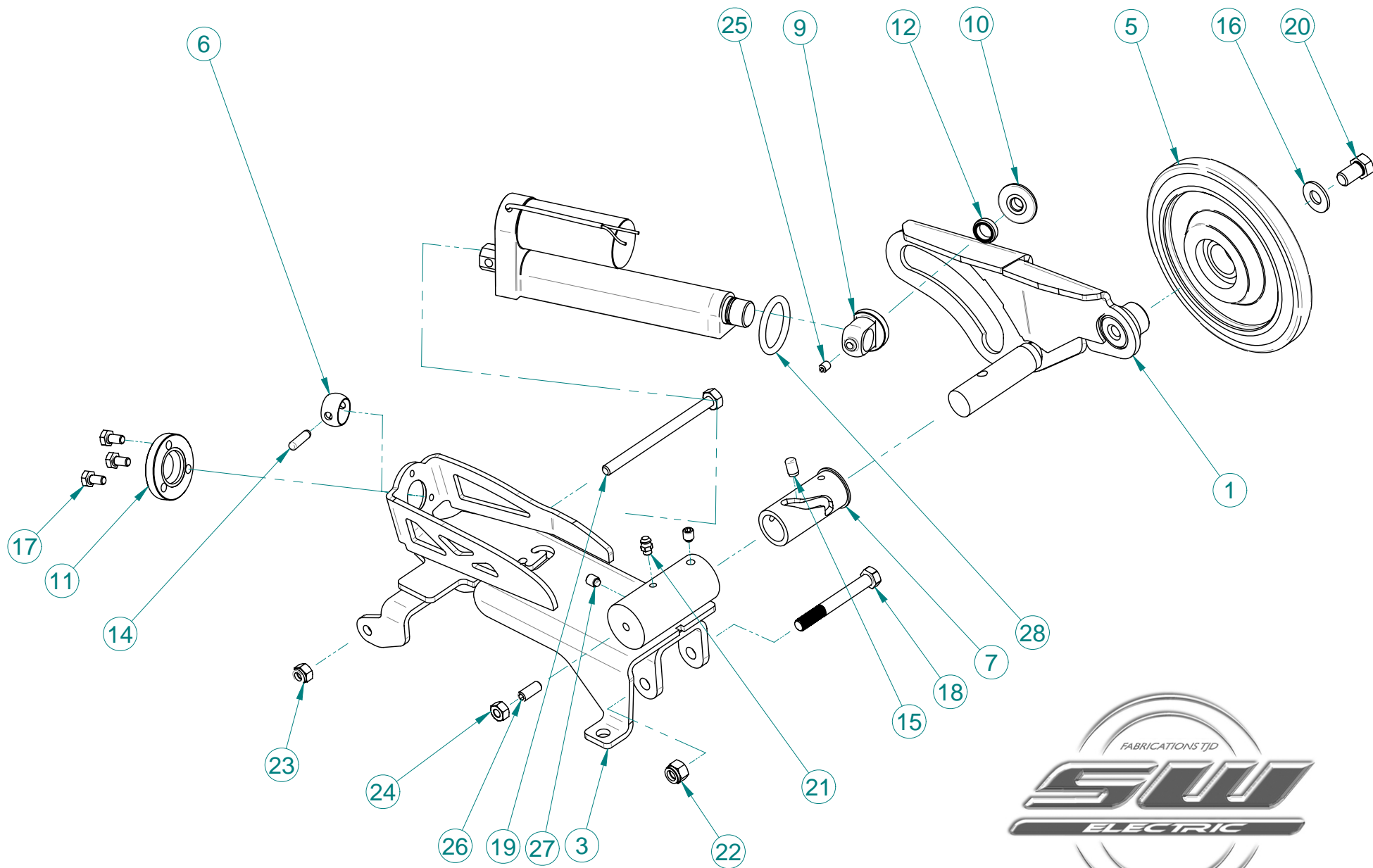
Driving to the gaz station will be now a pleasure thanks to the increased control and the reduced turning radius. In the same way, crossing roads will not cause any more problems and danger. You only have to lower the wheels when you arrive at a road, **no need to stop**, and raise them when you are done. The SW Electric will make it easier to put the snowmobile in the garage or to load your snowmobile in a trailer, by eliminating the friction caused by the skis on the ground.

It's up to you now to take full advantage of the benefits offered by the SW Electric.

Thank you for your trust in Les Fabrications TJD, have nice rides!



EXPLODED VIEW OF THE SNOWMOBILE WHEELS



3



SNOWMOBILE WHEELS INSTALLATION

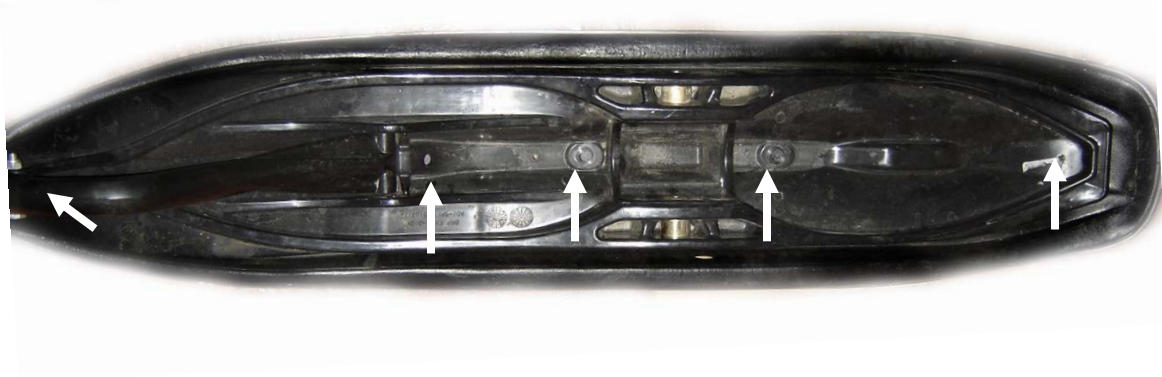
Part list

RÉF	# pièce/part	QTÉ/QTY
1	00BR-023D	1
2	00BR-023G	1
3	00SU-020D	1
4	00SU-020G	1
5	02R0-001	2
6	04AR-021	2
7	04AR-022D	1
8	04AR-022G	1
9	04AR-023	2
10	04AR-024	2
11	04AR-025	2
12	04D0-007	2
13	ACTUATEUR_IMD3	2
14	DP114x1	2
15	DP5116x112	2
16	FW-7116-USS	2
17	HB-114-20NCx112	6
18	HB-318-16NCx3	2
19	HB-5116-18NCx4-112	2
20	HB-7116-14NCx314	2
21	HGH-114-28NFx35164	2
22	HLN-318-16NC	2
23	HLN-5116-18NC	2
24	HN-5116-18NC	2
25	HSSSFP-114-28NFx318	2
26	HSSSFP-5116-18NCx1	2
27	HSSSHD-5116-18NCx318	4
28	ORING_NO_325_DURO_70	2



SKIWHEEL INSTALLATION

1. Begin by removing the saddle of the ski. To do so, you will have to remove the nuts (3) and screws (2) as shown (the ski is shown without the snowmobile for the sake of clarity).



2. Then remove the bolt from the ski handle:



3. Position the skiwheel module on the ski (for the left side, use the left module, the wheel should then be toward the outer side of the ski as shown) and insert the bolt provided to the ski handle and tighten it.



4. Reinsert the slide in the 3 holes of the ski and screw the nut through the skiwheel module leg.



5. Using the bracket on the side of the ski, drill a hole using a 3/8" drill bit.



6. Insert the bolt provided and tighten it.



7. Remove the nut screwed on step 4 and put the saddle back on the ski. Screw the nuts (3) and the screws (2) from step 1. Put threadlocker (Loctite) on the threads of the nut through the skiwheels module leg (step 4).

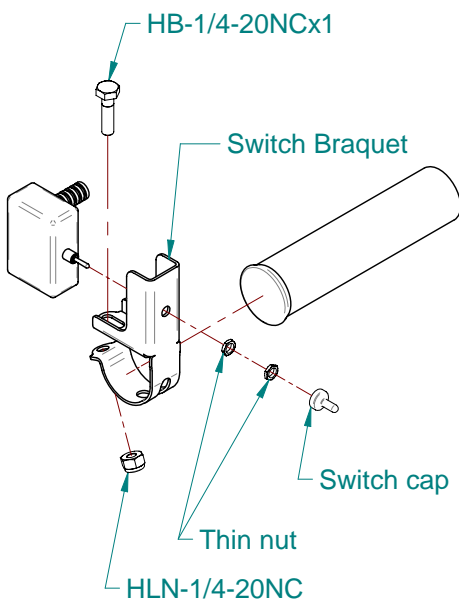
8. Follow the same steps for the other ski of the snowmobile.

SNOWMOBILE WHEELS INSTALLATION

Electrical connection

- 1- Assemble the switch on the switch bracket with one of the two thin nuts. Insert the other nut into the cover of the switch cap, a lip is made for that in the cap, and screw it.
- 2- Tighten the bracket on the handle of the snowmobile with a 1/4-20NC X 1 bolt and one nylon 1/4-20NC nut.
- 3- Attach the wires using tie wraps (not shown) on the structure of the snowmobile. Make sure to locate the wires so that there is no risk to damage them.
- 4- Connect the red wires of the cylinders together and connect them to the yellow wire of the switch (as shown) using the connectors.
- 5- Connect the two black wires of the cylinders together and connect them to the green wire of the switch (as shown) using the connectors.
- 6- Connect the positive terminal of the battery to the red wire of the switch (as shown) using the connectors.
- 7- Connect the negative terminal of the battery to the black wire of the switch (as shown) using the connectors.

Steps 1 to 3



Steps 4 to 7

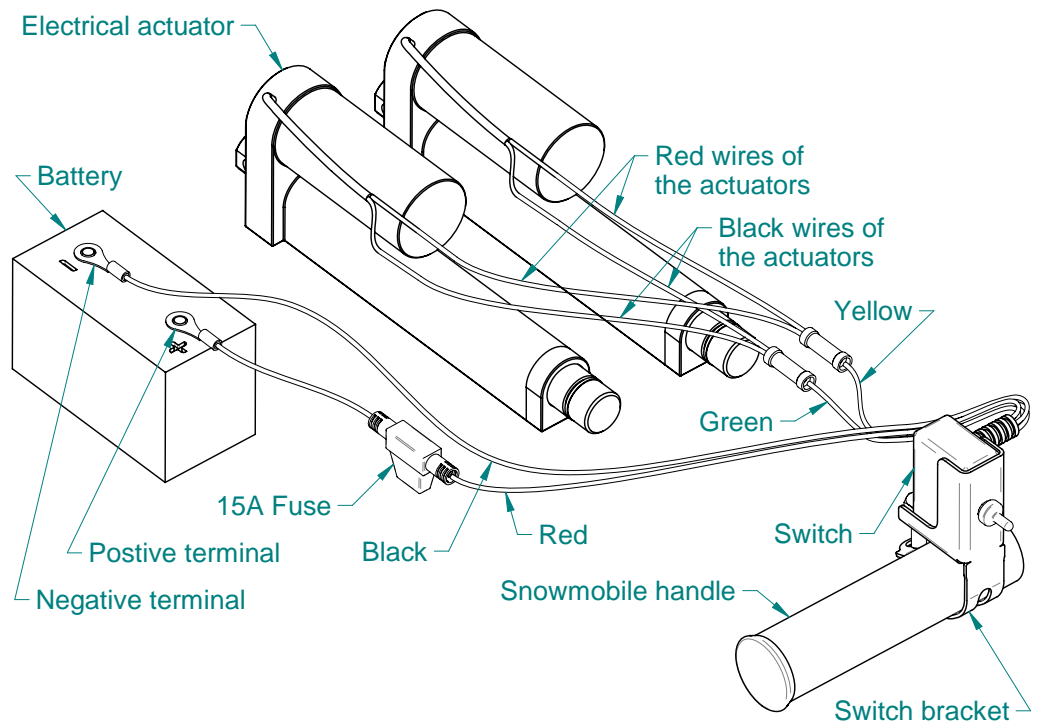


Figure B



MAINTENANCE

Each 50 cycles, make sure that the mechanism is well lubricated. Lubricate with grease formulated for temperatures below -40 degrees Celcius (-40 degrees Fahrenheit).

Important : Grease the mecanism when the actuators are retracted in order to avoid a surplus of grease which could damage the actuators.

WARNING AND SAFETY



- 1- Read the safety and operation recommendations in your snowmobile owner's manual. This safety information also applies to your snowmobile when equipped with ski wheels.
- 2- When the wheels are lowered, circulate at a maximum speed of 10km/h.
- 3- When the wheels are lowered do not takes a jump with the snowmobile, it could damage the mecanism.
- 4- When the wheels are lowering, make a visual check of the movement of the mechanism to make sure that nothing is blocking the mechanism (a branch or ice for exemple).
- 5- The wheels kit is intended to be used with the manufacturer parts of the snowmobile (carbide runners and ski for exemple).

